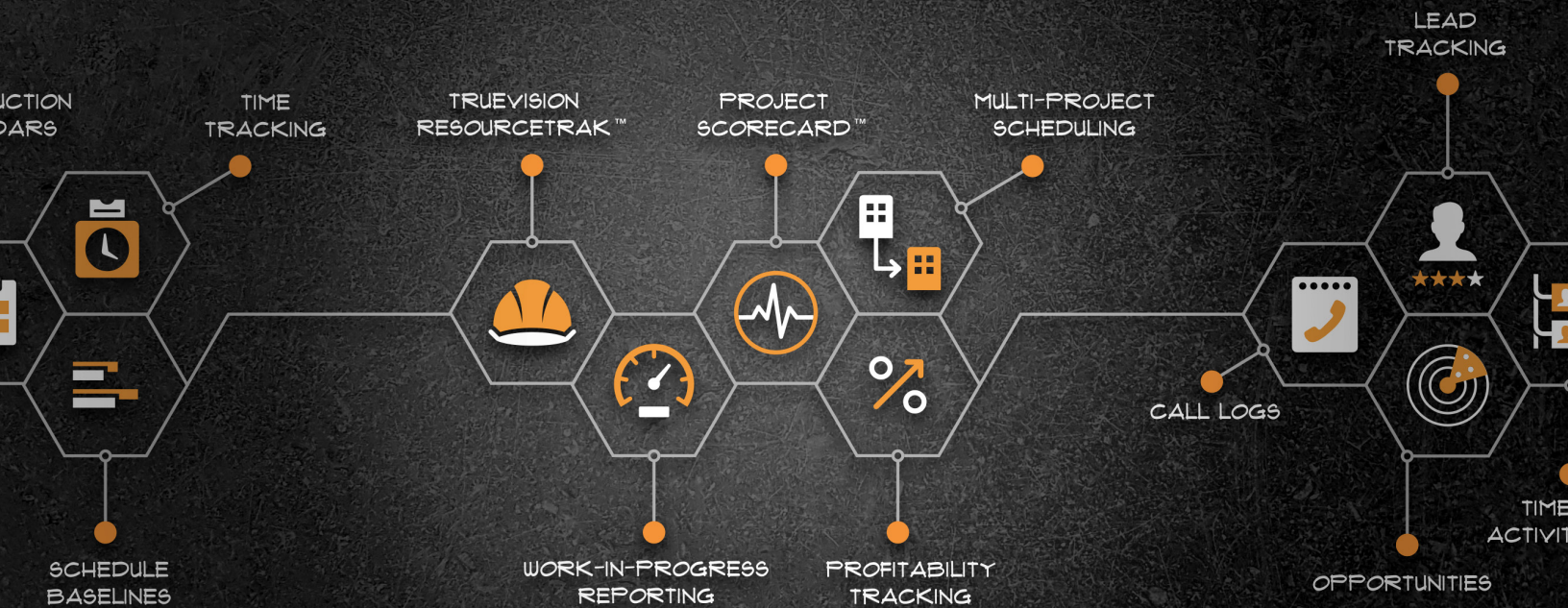


# TrueVision<sup>TM</sup> Business Intelligence










# The #1 rated construction management software according to leading reviewers & real-world pros.

The ConstructionOnline platform leads the construction software industry in functionality, value, customer support and more. Innovative builders around the world say our tools to help them build better, faster and smarter.



Published: October 01, 2022

## Average User Ratings for Construction Management Products

	 Overall	 Functionality	 Ease of Use	 Value for Money	 Customer Support
ConstructionOnline (n = 71 reviews)	<b>95</b>	<b>91</b>	<b>90</b>	<b>94</b>	<b>98</b>
Procore (n = 103)	<b>93</b>	<b>88</b>	<b>88</b>	<b>84</b>	<b>87</b>
Autodesk Construction Cloud (n = 28)	<b>83</b>	<b>81</b>	<b>78</b>	<b>80</b>	<b>84</b>
Buildertrend (n = 29)	<b>79</b>	<b>79</b>	<b>75</b>	<b>69</b>	<b>83</b>
Construction Management Category Average (n = 6,599)	<b>90</b>	<b>88</b>	<b>87</b>	<b>86</b>	<b>88</b>

Reviews Insights Competitive Comparison is based on end-user reviews from GetApp. Average ratings and review counts include published reviews within the 12-month trailing year of the publication date. Ratings are collected on 1 to 5 basis and scaled to 20 to 100 for comparative purposes. Reviews Insights Competitive Comparison constitutes the subjective opinion of individual end-user reviews and ratings; they neither represent the views of, nor constitute an endorsement by GetApp, or its affiliates.

# Track Performance with Project Scorecard.

The TrueVision Project Scorecard gives you and your team a holistic, company-wide view of your projects' performance. See which jobs are under- or over-performing, track budgets & profitability, identify & mitigate risks and much more.

## See which jobs are ahead or behind with Schedule Progress Tracking.

TrueVision schedule progress tracking gives you a high-level view of how your projects are performing against expected completion dates. See at-a-glance how many workdays ahead or behind each job is, and how scheduled durations compare with actuals. For added flexibility, you can choose to enter schedule dates manually or pull real-time values from OnPlan™ Schedules in ConstructionOnline.

## Get a firm grasp on financial health with over / under budget views.

TrueVision Project Scorecard leverages the power of the industry's most comprehensive estimating solution - OnCost Estimating - to provide a straightforward and easy-to-scan overview of your projects' financial health. Quickly see how budgets compare with actuals. Know which jobs are making you money - and which aren't. You'll be prepared to address current risks, and make better decisions for the future.

Scheduling				Financials			
SCHEDULE PROGRESS	PROJECTED VS. ACTUAL WORKDAYS	PROJECTED VS. ACTUAL END DATE	PERCENT COMPLETE	OVERAGES	REMAINING BUDGET	ACTUAL GROSS PROFIT	UNAPPROVED CHANGE ORDERS
	- 3 workdays	3 ahead	% 5.56		\$ 776,610.00	\$ 95,008.79	
	+ 10 workdays	20 behind	% 61.02		\$ 305,000.00	\$ 29,754.03	
	+ 0 workdays	10 ahead	% 10.58		\$ 43,260.74	\$ 10,260.79	
		5 behind	% 95.08		\$ 5,140.00	\$ 36,485.96	
				\$ 10,230.00	\$ 40,140.00	\$ 18,250.97	
	+ 4 workdays		% 100.00		\$ 0.00	\$ 74,857.54	

## Predict headway (and headaches) with color-coded status indicators.

TrueVision Scorecard allows you to set custom thresholds for task completion, upcoming & overdue items, unresolved RFIs and much more. You and your team can address potential roadblocks before they lead to costly impacts in the future - and also recognize where jobs are running smoothly and according to plan.

## Gain even more visibility and intuition with advanced filter options.

Get more insight out of your project data with powerful, customizable filter options. Track performance variation across regions, or drill down to specific key roles to understand how team members compare. Filters can also be combined for advanced reporting analyses and trend detection.

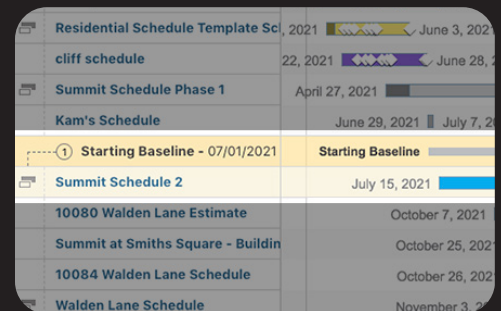
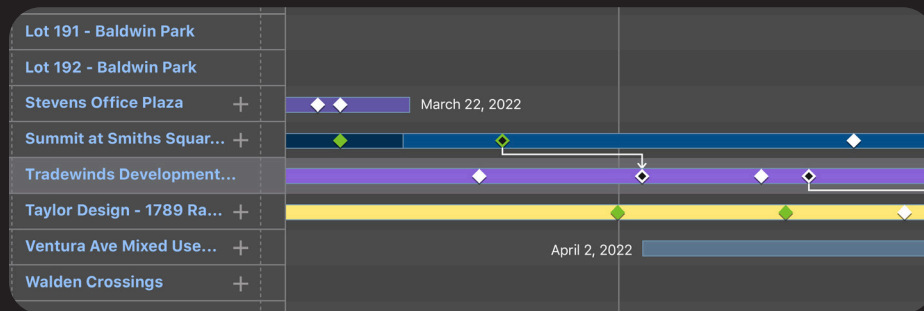
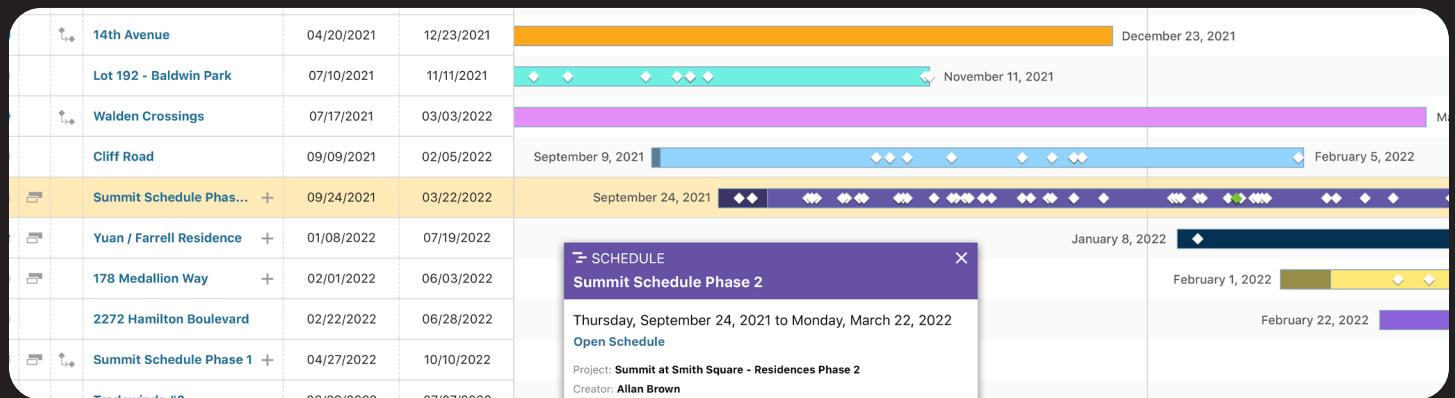


# TrueVision™ Scheduling - Advance with Agility.

In the fast-paced construction industry, the ability to control change orders is critical. Create, manage and invoice all of your change orders within ConstructionOnline and ensure absolute clarity.

## Know where every project stands with the company-wide schedule view.

The powerful TrueVision Scheduling view gives you an all-in-one overview of every project's schedule and how they relate to one another. See start and end dates, milestones, percent complete and more. Discover the power to schedule strategically with linkable milestones, draggable schedule bars and multiple view options.



## Only see what's relevant with flexible filters and view settings.

TrueVision Scheduling features cutting-edge filtering and view options, so you can find what's important quickly. Gain more useful insight into which jobs are ahead or behind, where potential conflicts may arise, and when best to schedule future projects.

## Identify schedule slippage with advanced baseline tracking.

View and compare one or more baselines to determine exactly how far ahead or behind the current schedule is. Baseline bars are displayed in the schedule Gantt view for easy visual reference, and are clickable to show more detailed slippage information.

# Increase Visibility, Control Costs & Predict Profits.

Centralized construction cost data, integrated accounting, and advanced predictive reporting combine to give you real-time visibility and insights.

## Break down financial silos with unified estimating, job costing and invoicing data.

TrueVision financial insights are drawn from ConstructionOnline's cutting-edge, integrated platform. By seamlessly joining data from estimating, change order management, client selections, invoicing and more, TrueVision gives you the power to turn input into insights for smarter construction practices.



## Gain visual understanding with comprehensive financial dashboards.

Cut through the clutter with easy-to-scan yet in-depth financial dashboards. Quickly reference project value by type, stage, region and more. See exactly how change orders are affecting your bottom line and delaying your jobs. Know what percentage of invoices have been paid, and how much is still outstanding.

## See a real-time review of financial health with Work-in-Progress Reporting.

TrueVision Work-in-Progress Reporting helps get more out of your ConstructionOnline financial data, so you can see exactly where your jobs stand in real time. See which projects are running profitably, and which may require attention. You can also get a high-level understanding of how projects are performing company-wide.

**Estimated / Actual Gross Profit**

ESTIMATED GROSS PROFIT: **\$28.15 m**      6.22%      ACTUAL GROSS PROFIT: **\$30.22 m**

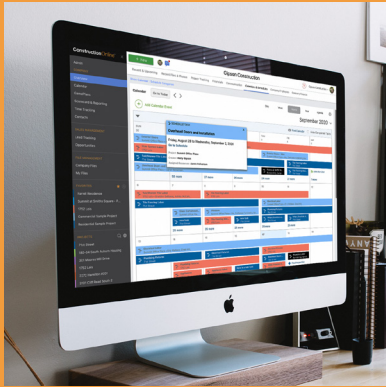
**Work in Progress**

PROJECT	ORIGINAL CONTRACT PRICE	CURRENT TOTALS	
		Total Price	Total Cost Basis
14 Avenue	\$ 800,566.67	\$ 800,566.67	\$ 500,140.00
14th Street	\$ 400,140.00	\$ 400,140.00	\$ 400,140.00
175 Medallion Way	\$ 480,856.58	\$ 540,931.58	\$ 270,558.79
180-64 South Auburn Housing	\$ 170,486.69	\$ 190,867.53	\$ 90,908.84
2272 Hamilton	\$ 519,399.08	\$ 524,424.08	\$ 304,826.50
71st Street	\$ 883,867.09	\$ 1,021,813.82	\$ 511,591.85
78th Street	\$ 540,000.00	\$ 540,567.00	\$ 495,265.22
Argento Offices	\$ 120,916.67	\$ 120,916.67	\$ 70,750.00
Baker Residence	\$ 519,399.08	\$ 524,424.08	\$ 304,826.50
Booth Building 1	\$ 6,113,827.35	\$ 6,113,827.35	\$ 4,528,761.00
Campbell Crossing #236	\$ 356,270.09	\$ 382,701.30	\$ 287,515.89
Enchanted Home 1	\$ 6,178,208.51	\$ 6,301,990.91	\$ 4,641,898.00
Farrell Residence	\$ 519,399.08	\$ 524,424.08	\$ 304,826.50
Gipson Towers - Common Spaces	\$ 800,566.67	\$ 800,566.67	\$ 500,140.00
Light Commercial Sample Project	\$ 4,178,208.51	\$ 4,301,990.91	\$ 2,641,898.00
Lot 187 - Baldwin Park	\$ 3,113,827.35	\$ 3,113,827.35	\$ 2,528,761.00
Lot 190 - Baldwin Park	\$ 6,178,208.51	\$ 6,301,990.91	\$ 4,641,898.00

## Predict income & expenditures over time with Cash Flow Reporting.

Forecast your company's finances with Cash Flow reporting. Based on expected completion dates, Cash Flow reporting pulls synchronized information between project estimates and schedules to show predicted inflow over time. Schedule draws, pay bills, and better manage your company's financial state.

We help more than 850,000 pros worldwide  
surpass their limits everyday.



### Try it for yourself, risk-free

Try ConstructionOnline for yourself with a 10-day free trial, featuring full access to our award-winning suite of management tools.

[Get Your Free Trial](#)



### Get a personalized demo

Let one of our product experts show you how ConstructionOnline can help you increase efficiency, reduce errors, and build smarter.

[Schedule Your Demo](#)



### See the latest & greatest

Just like you, we love to build. We're constantly innovating to meet and exceed our clients' needs - click below to see what we've been up to.

[See the Latest News](#)

*"The absolute best construction management program,  
paired with phenomenal customer service."*

Sebastian Ferdinand, Veritas Contracting Group